

Flag Relay

Application

To provide a latching relay that resets via mechanical and/or electrical means when required.

The Flag Relay Offers

- Flag window to indicate tripped state.
- Compatibility with standard 11-pin relay configurations.
- Vibration resistant electrical and/or mechanical reset facilities.
- Relay will remain latched with the supply removed.
- Plug-in unit, standard 11-pin base.
- 2-pole change over that resets via mechanical and/or electrical means.

Specifications

Coil Voltages

- See Ordering Information.

Voltage Tolerances

- 80% to 110%

Minimum Pulse Length for ON/OFF

- 50mS

Relay Contacts

- 2-pole changeover 240v 10A

Base Mounting

- Wall or Din rail

Materials

- Housing clear plastics

Ambient Temperature Operation/Storage

- -30 to +60°C / -30 to +80°C

Design Standards

- Coil Duty Cycle DC - 3 minutes max
- AC - Continuous

Ordering Information

Order Code

12v AC A00098
12v DC A00102

24v AC A00099
24v DC A00101

48v DC A00324

110v AC A00097

240v AC A00100

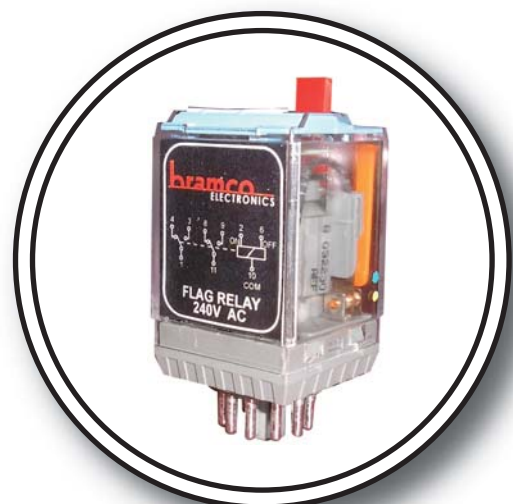
415v AC A00308

Base to suit all relays E30022

Bramco Contacts

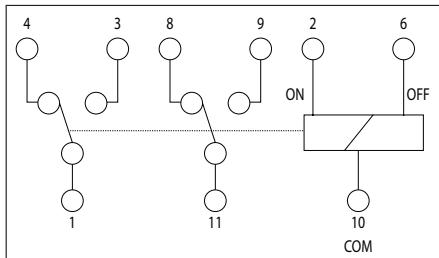
19 Aruma Place
Cardiff, NSW 2285
AUSTRALIA

Telephone +61 2 4954 4721
Email sales@bramco.com.au
www.bramco.com.au

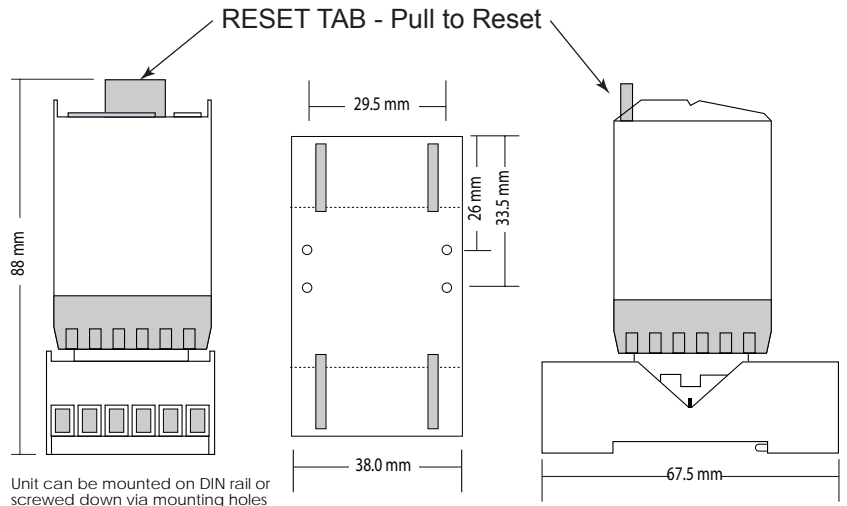


Flag Relay

Connection Details



Flag Relay/Base Dimensions



Contacts for A00100

Materials:

Max. switching current AC1
 Max. peak inrush current (20 ms)
 Max. switching voltage
 Max. AC load (Table 1)
 Max. DC load

AgNi
 10 A
 30 A
 250 V
 2.5KVA
 see table 2

Table 1 Electrical Life, ops. x 10⁶

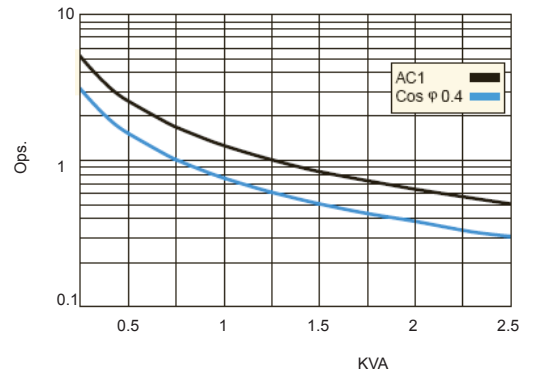


Table 2 Max. DC Load

