



Earth Leakage Earth Continuity ELEC Relay

Application

The Bramco ELEC Relay provides detection of Earth Fault Currents flowing in a power system and monitoring of the Earth Circuit in a supply cable by grounding the pilot core via a diode, polarised positive to earth.

Earth Leakage Offers:

- Easily configured latch or non-latch and fixed Fail-safe operation
- Easily adjustable trip time and current settings
- LED indication:
 - EL Warning - indicates the current exceeds the trip threshold
 - EL Trip
 - EL Latched - indicates the EL relay is latched
 - OC toroid – toroid connections open circuit
- External latch reset
- 2x Separate voltage free EL contacts
- May be used on limited/unlimited systems

Earth Continuity Offers:

- Easily configured latch or non latch and fixed Fail-safe operation
- LED indication
 - EC healthy
 - EC latch - indicates the EC relay is latched
 - Pilot short – pilot isolation resistance below 500 Ohms
- External latch reset
- 2x Separate voltage free EC

Additional Features:

- Diode termination to earth on pilot wire
- Operational 0-45 Ohms
- Remote mode for start and stop control via pilot wire
- LED indication:
 - Power – power healthy indication
 - Pilot open – pilot resistance above 45 Ohms

Ordering Information

Order Code

A01017B 500mA-500ms 24-48VAC/DC
A01041B 500mA-500ms 110VAC

Specifications:

Power Input

- 24-48vDC

Earth Leakage

Current - 50 - 500mA
Trip Delay Time - 50 - 500ms

Earth Continuity

Pilot Resistance - 45 Ohms
Trip Delay - 100ms

Relay Contacts

- 1 x C/O
- 1 x N/O
- 5Amp 250vAC

Operating Temperature

0-40°C

Dimensions

150mmW x 75mmH x 110mmD

Material

High impact resistant polycarbonate

Mounting

DINrail or screw mounting

Bramco Contacts

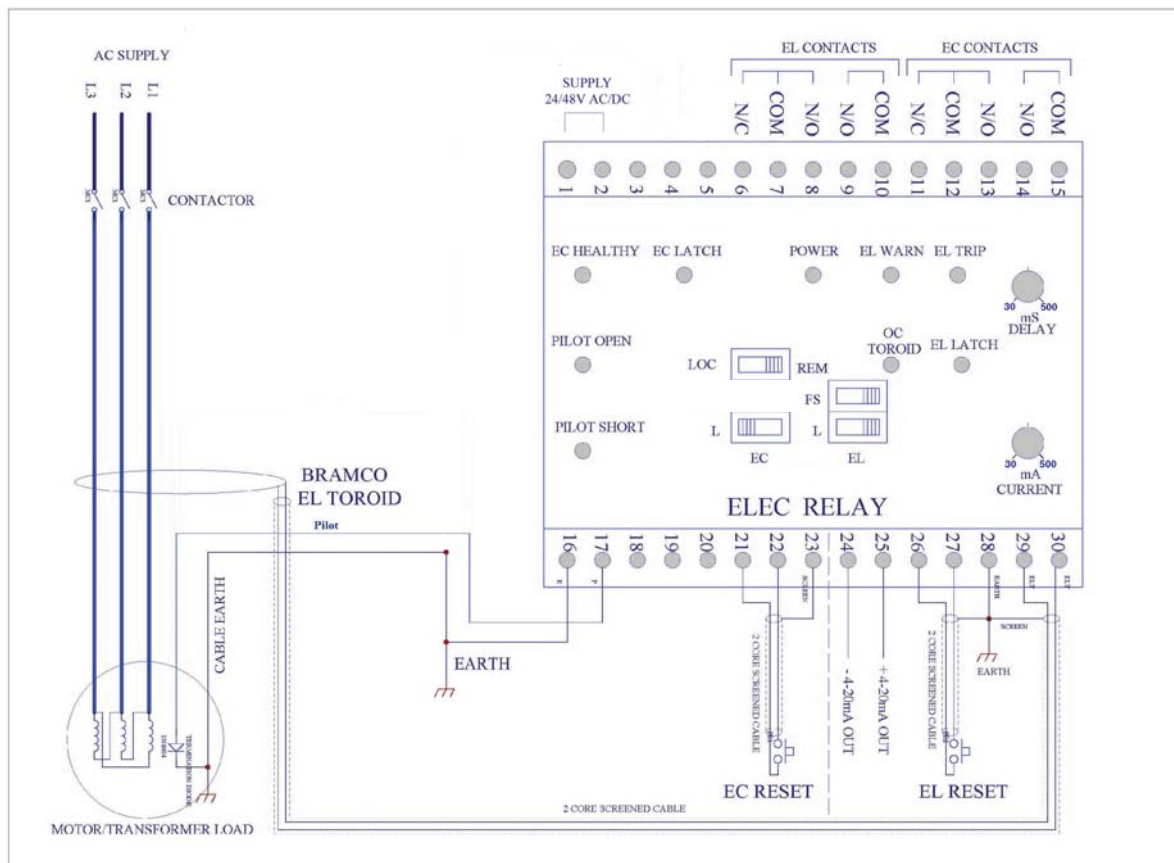
19 Aruma Place
Cardiff, NSW 2285
AUSTRALIA

Telephone +61 2 4954 4721
Email sales@bramco.com.au
www.bramco.com.au



Connection Details

Recommended Diode Termination IN4004 - 1 amp 400v
 Toroid Leads to be SCREENED CABLE. Earth Screened at RELAY END ONLY



Outline and Mounting Hole Dimensions

