



Earth Leakage Lockout Model i-G

Application

The Bramco i-G has been designed to detect Earth Faults on conductors in an outgoing circuit of an electrical system and to prevent the closure of the electrical supply to the de-energised circuit.

Operational

When incoming mains power is switched onto the system the LR scans the outgoing cable and will lockout if an earth fault is present of 10K ohms or less. Detection of a fault will prevent the circuit switching device from being closed.

The unit is fail safe in operation and will drop out on detection of a fault and remain open until the fault is cleared.

The power supply to this unit is designed to maintain the function in its healthy mode for 2 seconds under no volt conditions thus preventing premature drop out under system fault conditions.

The i-G Offers:

- Fail safe operation
- Relay scans the outgoing cable and will lockout if an earth fault is present
- Outgoing circuit is monitored until the contactor or circuit switching device is closed
- Drop out on fault detection. Remaining open until fault is cleared
- LED indication of power on
- LED indication of system healthy status
- Usage in conjunction with an 1100v to 24v intrinsically safe barrier to isolate high voltage from the detector circuit

Specifications

Supply

- 110vAC 50/60Hz standard
- 240vAC 50/60Hz optional
- 24vAC or DC 50/60Hz optional
- 48vDC optional

Material

- Housing high impact poly carbonate

Voltage Tolerances

- -30% to +20%
- -100% for 2+ seconds

Fail Safe

Relay contacts energised whilst phase to earth resistance >10k Ohms

Relay Contacts

- 2 pole changeover 5A-240v

Base Mounting

- DIN rail or screw down.

Bramco Contacts

Head Office

Bramco Electronics - ABN 49 327 604 798

Unit 2&3/2 Callistemon Close
Warabrook NSW 2304
PO Box 241 Hunter Region MC
NSW 2310 AUSTRALIA

Telephone +61 2 4014 4444
Facsimile +61 2 4967 4100
Email sales@bramco.com.au

Distributor Locations

Australia:

- Newcastle NSW
- Wollongong NSW
- Cairns QLD
- Brisbane QLD
- Emerald QLD
- Perth WA

South Africa:

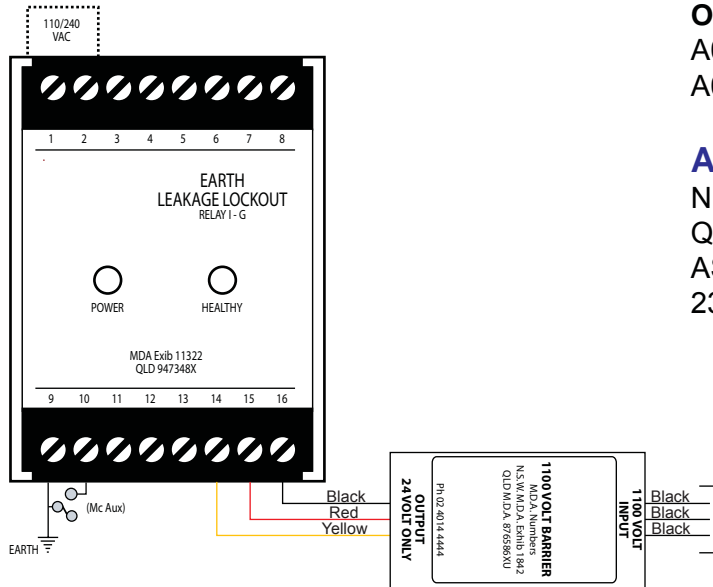
- Heidelberg - Emis Sales
- Delmas - Bramco South Africa

USA:

- Bland, VA



Typical Installation



Ordering Information

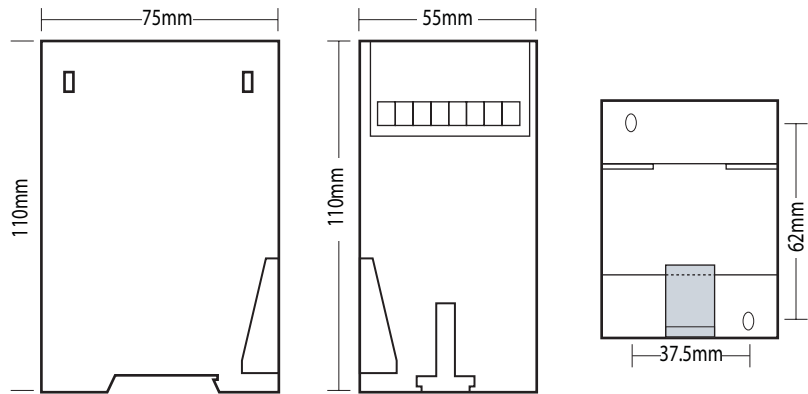
Order Codes

A00021 (specify voltage)
A01141 - 24-48V ACDC

Approvals/Conformance's

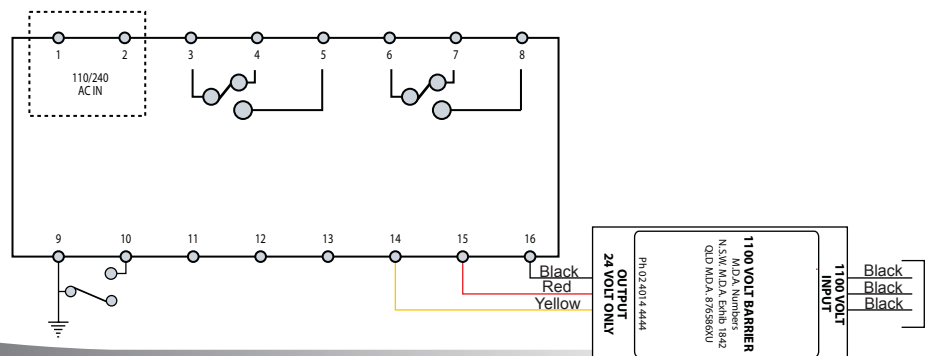
N.S.W Mines MDA Ex. 11322
QLD Mines QMD 947348 X
AS 2081:1234-1988
2380.7-1987

Outline and Mounting Hole Dimensions



Unit can be mounted on Din Rail or screwed down via mounting holes

Connection Details



BRAMCO
ELECTRONICS

ABN 49 327 604 798
PO Box 241
Hunter Region MC
www.bramco.com.au

© Copyright Bramco Electronics
Specifications subject to change without notice March 2009